

# ROYAL ARSENAL AIR SOURCE HEAT PUMPS

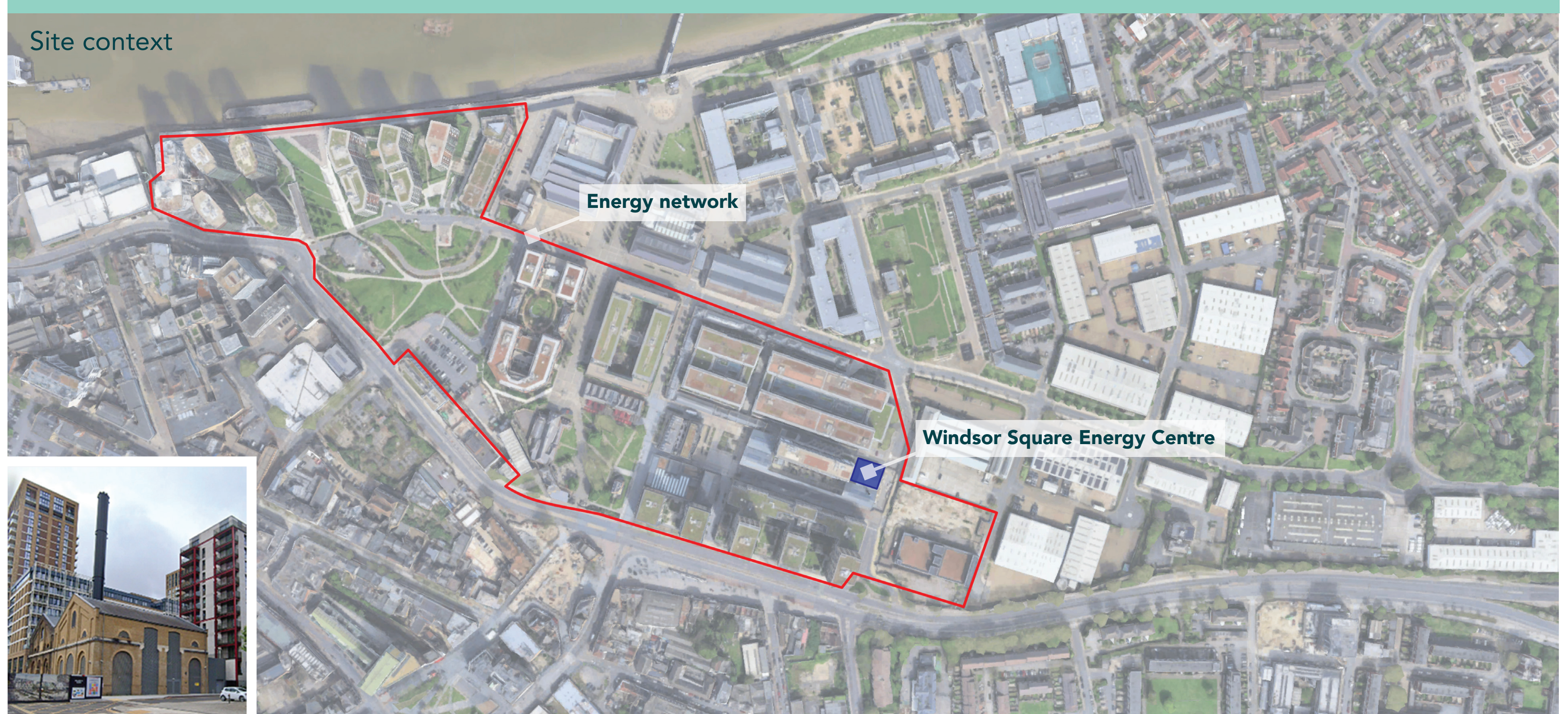
Thank you for taking the time to view our proposals for decarbonising the energy network. We welcome your thoughts and encourage you to review the plans and share your feedback with us.

## Background

This consultation outlines the proposed decarbonisation strategy for the district heat networks, shown within the red boundary on the map. This network is currently served by the Energy Centre at Windsor Square and managed by SSE.

The Energy Centre uses a combination of Combined Heat and Power (CHP) units and gas boilers to deliver heat through a network of pipes to local homes.

Following changes in Government legislation we are proposing to install air source heat pumps to work alongside the existing system. This upgrade will help reduce carbon emissions and support a cleaner, more sustainable energy strategy.



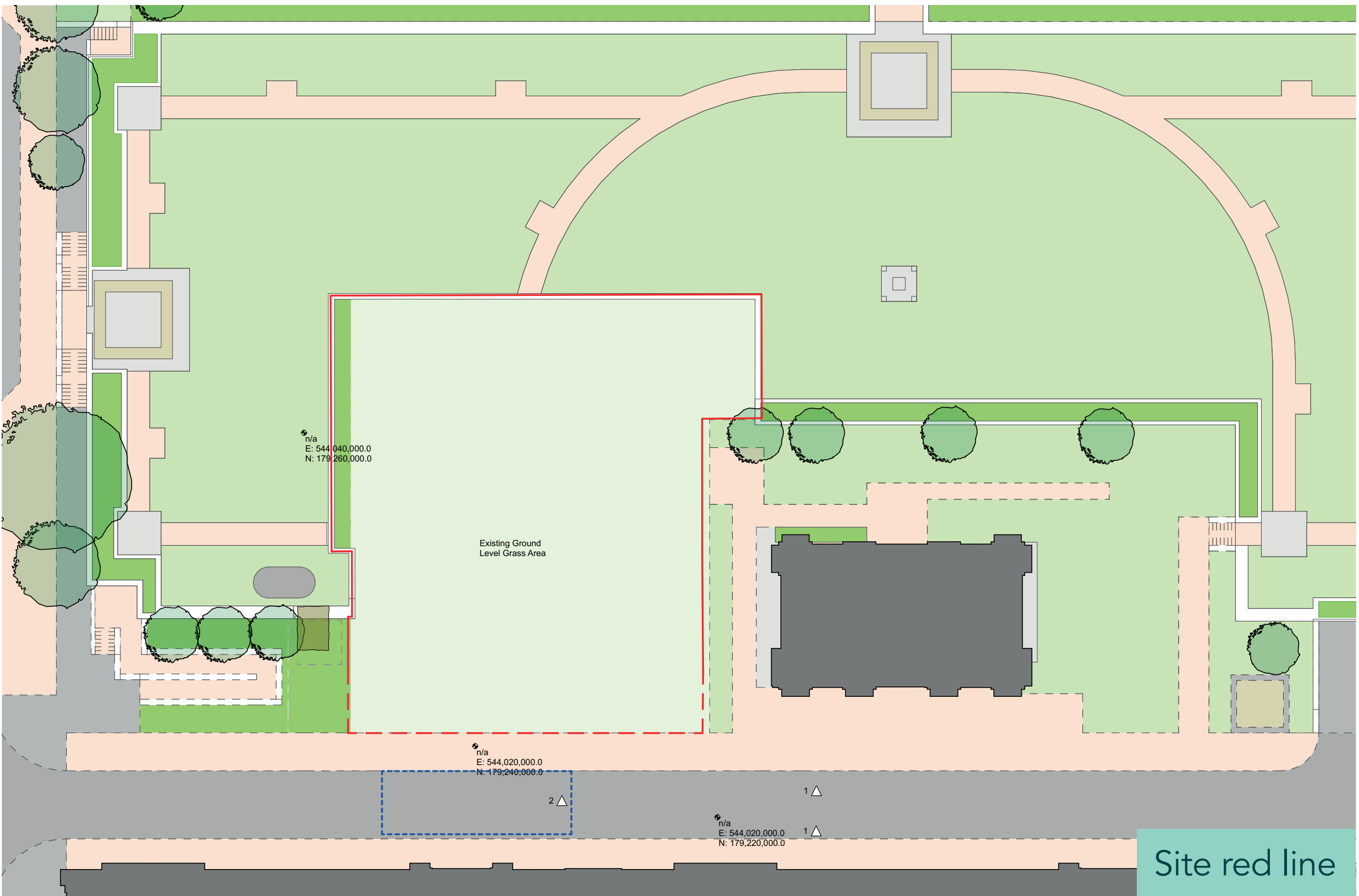
## THIS IS BEING PROPOSED TO

- Improve the environmental performance of the network by reducing carbon emissions from the district heat network, in line with planning policies and Part L of the Building Regulations.
- Compliment the existing network to meet the heating needs of the final phases of development at the Royal Arsenal Riverside.

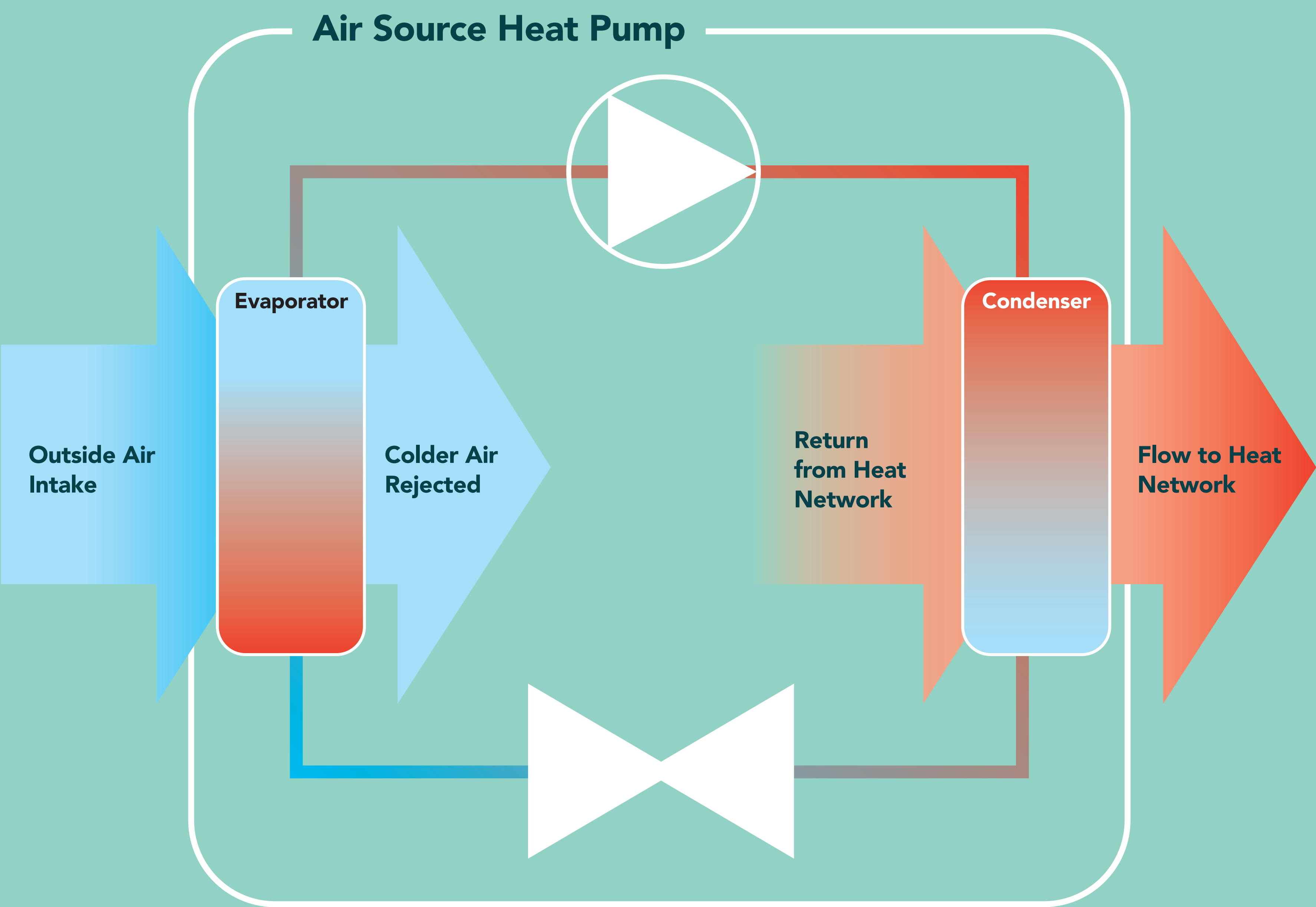


# PROPOSED LOCATION

- It is proposed to locate the ASHP within an extended built structure to the existing undercroft car park.
- This site was selected due to its proximity to the existing Energy Centre located at Windsor Square. This will allow for pipework connections along Arsenal Way.



## WHAT IS AN AIR SOURCE HEAT PUMP?

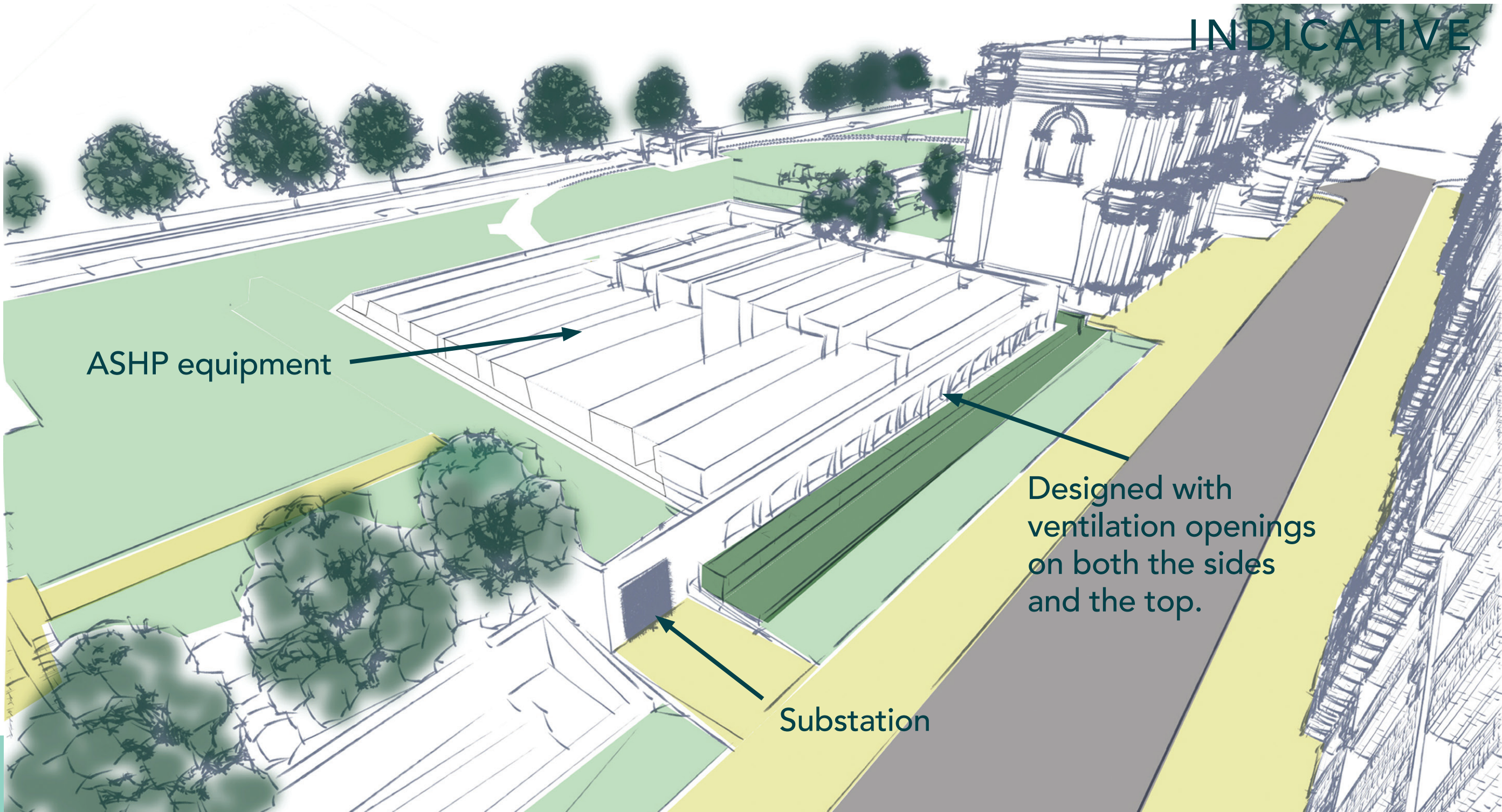


An ASHP is a system that extracts heat from the outside air and transfers it indoors to provide heating and hot water. It works using a refrigerant cycle and is an established low-carbon alternative to traditional gas-based heating systems.

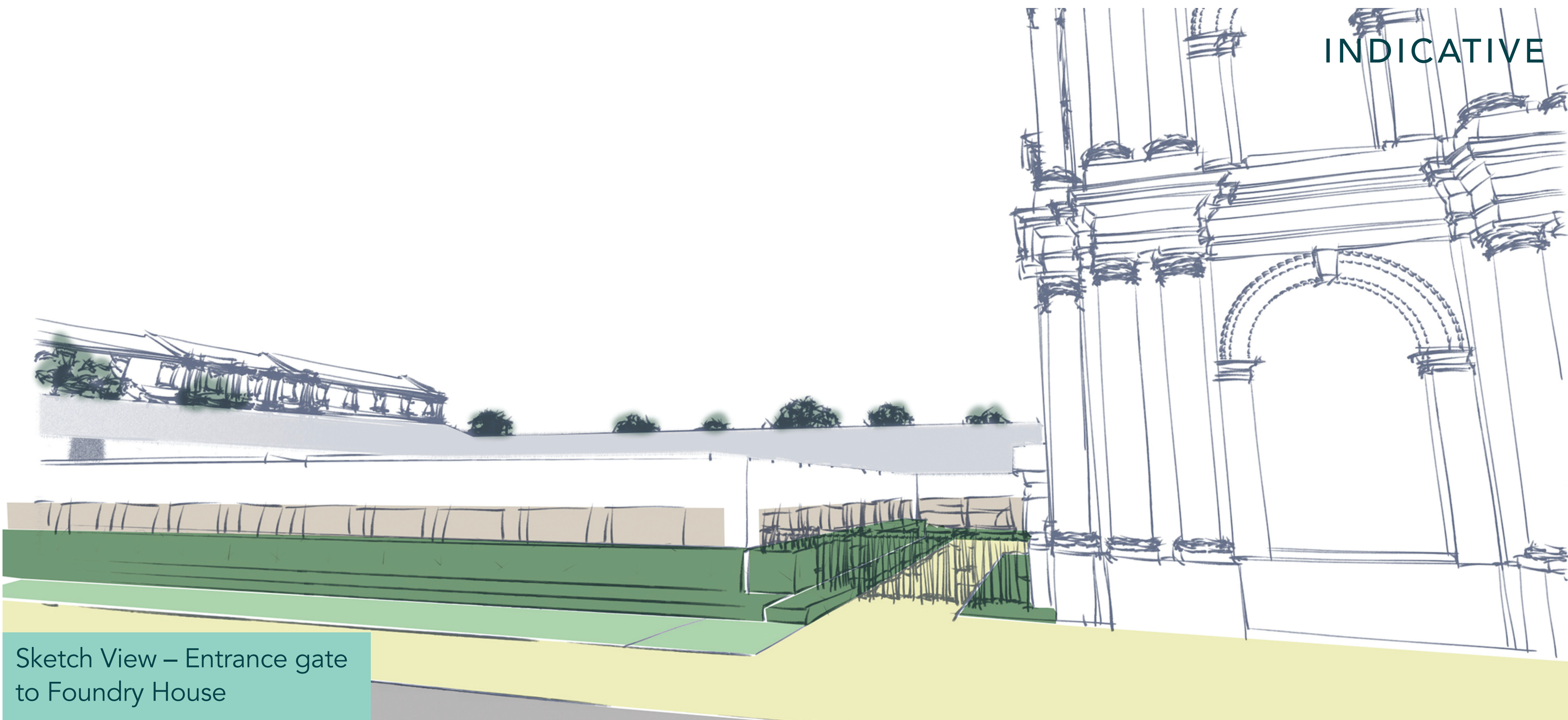


# WHAT WILL THE APPEARANCE BE LIKE

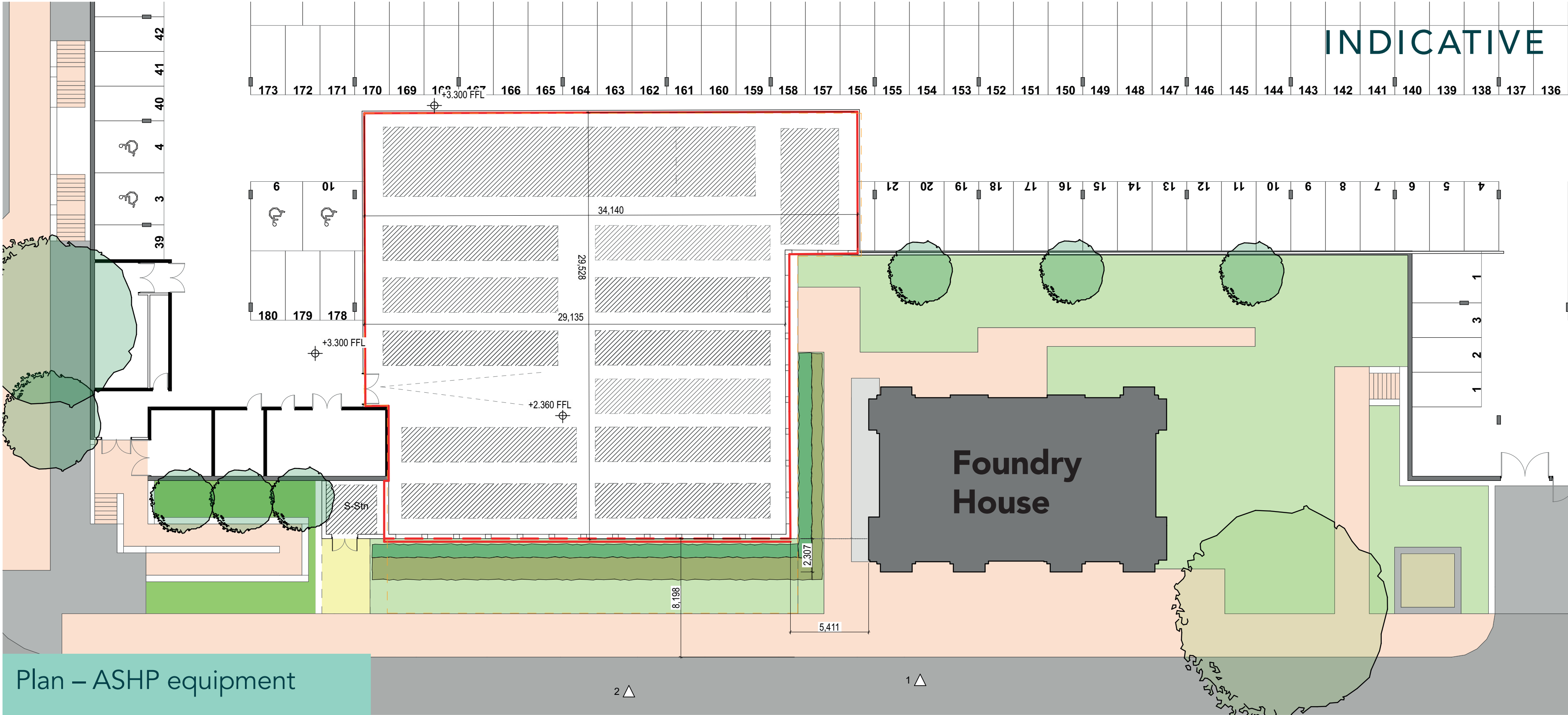
On the following boards, we are presenting indicative images of what the ASHP could look like at ground level, followed by two options on how the site might be enclosed



Sketch View – ASHP equipment



Sketch View – Entrance gate to Foundry House



Plan – ASHP equipment

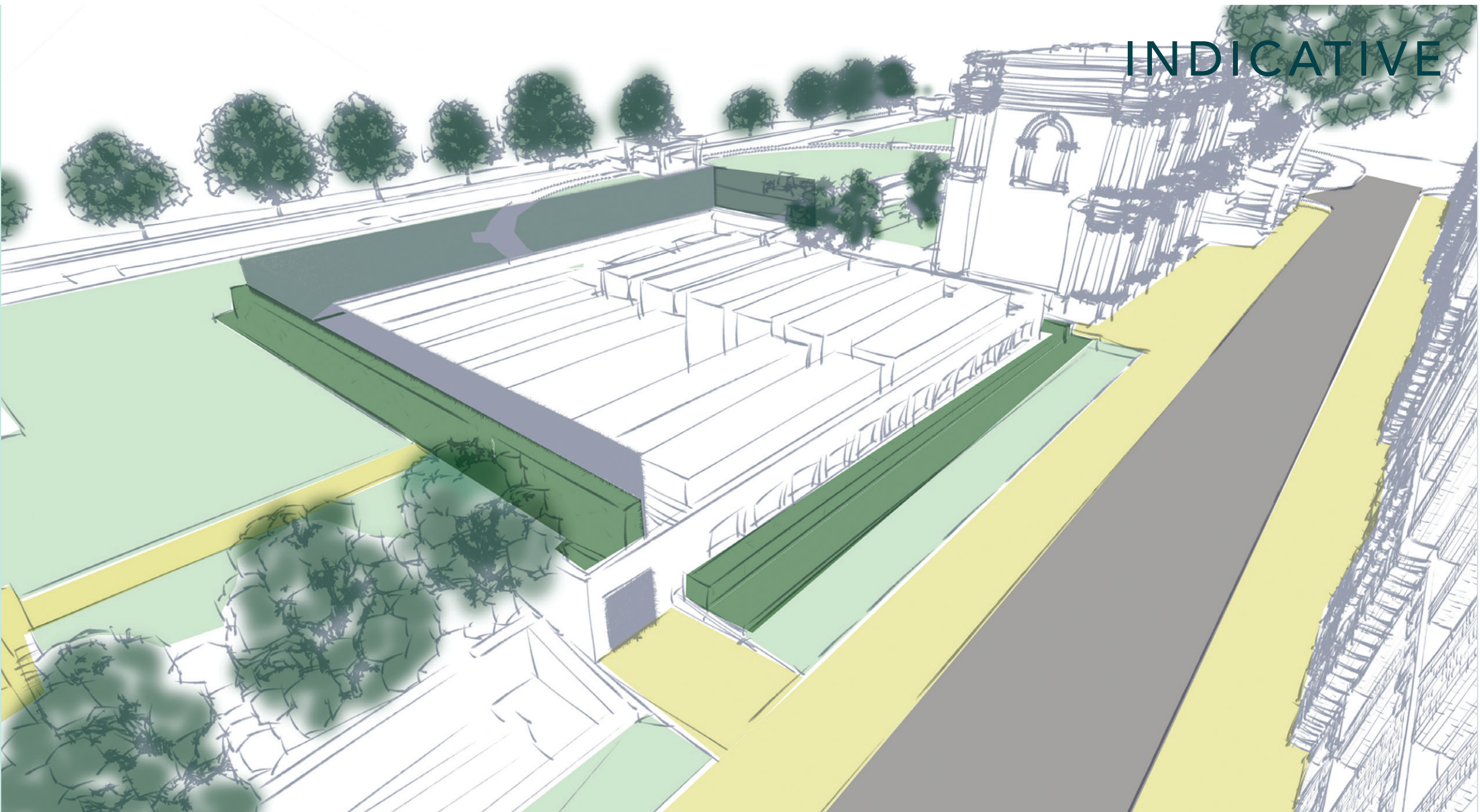


# WHAT ARE THE OPTIONS?

## Option 1

The ASHP will be enclosed within a compound designed with ventilation openings on both the sides.

This option proposes to fence off the compound, with no public access, which would have a planting buffer at Wellington Park grade.

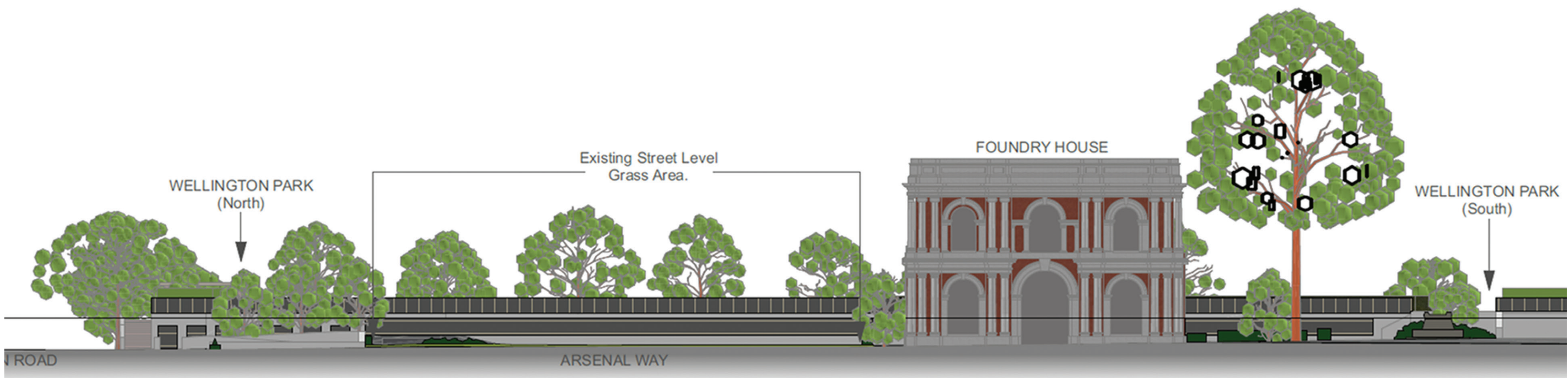
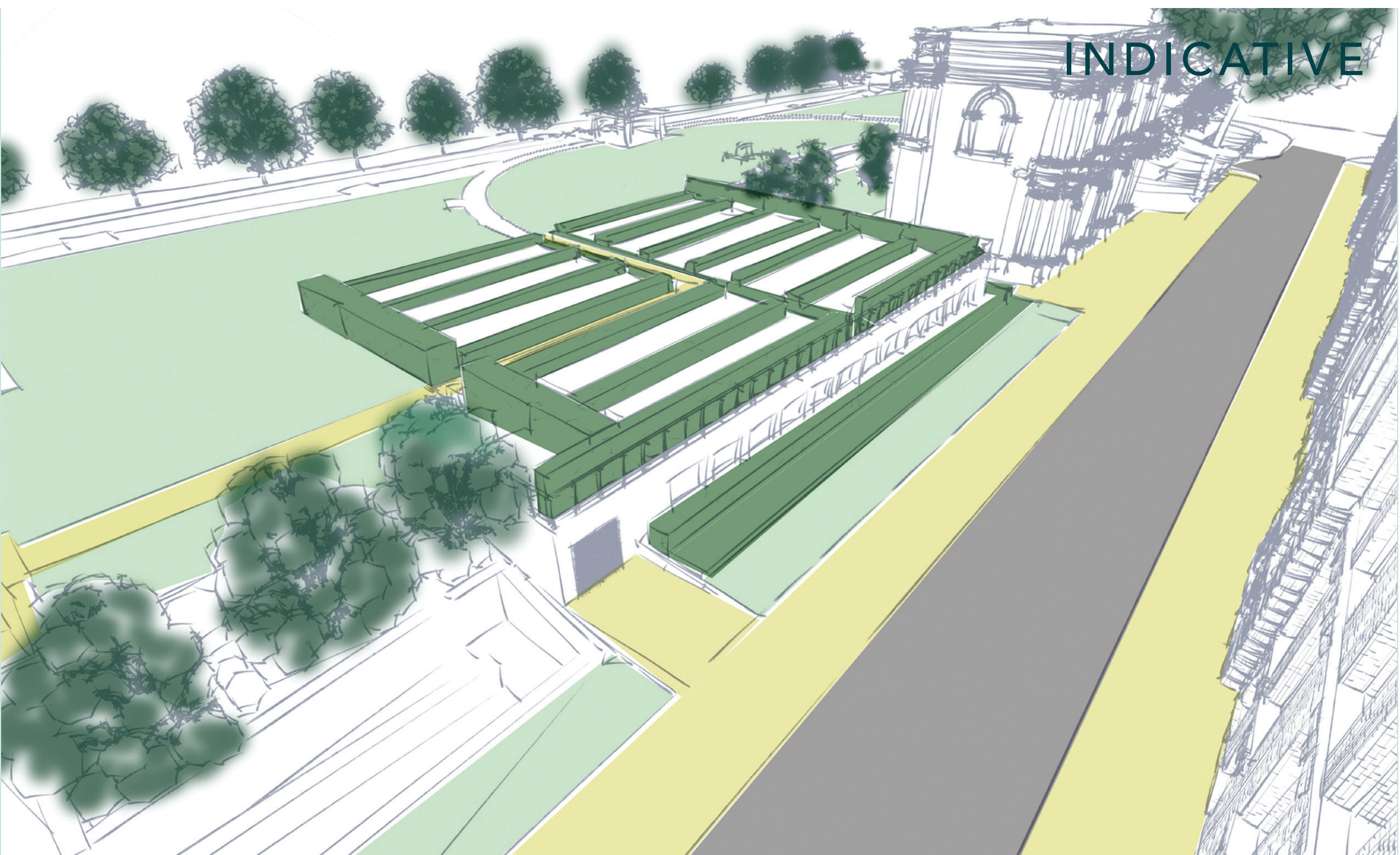


## Option 2

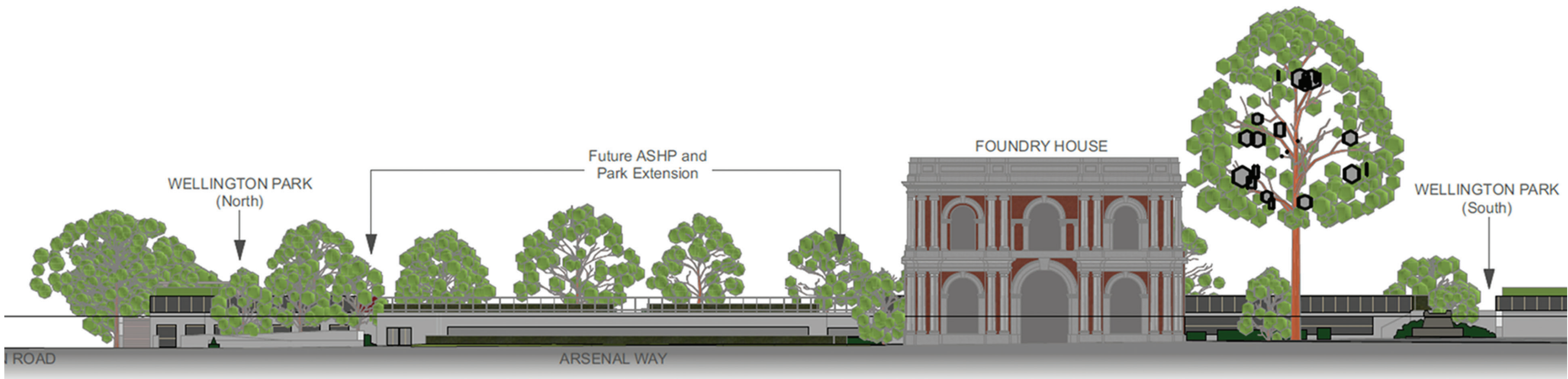
The ASHP will be enclosed within a compound designed with ventilation openings on both the sides and the roof.

To integrate the structure into the park's landscape, the rooftop vents will be screened with evergreen planting, creating a formal garden appearance.

The vents at the top are designed to facilitate air circulation. These will be protected by reinforced grills and surrounded by landscaping. This will allow members of the public to walk through the site.



Existing elevation along Arsenal Way



Proposed elevation along Arsenal Way



# ENVIRONMENTAL IMPACTS



## Is the Air Source Heat Pump Noisy?

The compound may produce a low hum, which is acoustically treated and comparable to the sound levels of household appliances such as refrigerators or dishwashers.

Measures including sound insulation and anti-vibration mounts will be in place to minimise any impact.

The installation will fully comply with all relevant British Standards and planning regulations regarding noise.

Noise will not exceed existing external night-time noise levels, remaining quiet during the night outside residential properties.



## Will the Air Source Heat Pump affect air quality?

ASHPs produce zero exhaust emissions, they do not burn fuel, emit carbon monoxide or smoke.



## Biodiversity net gain?

The proposed landscaping in and around the ASHP will improve local biodiversity, making it a better place for nature than it was before.

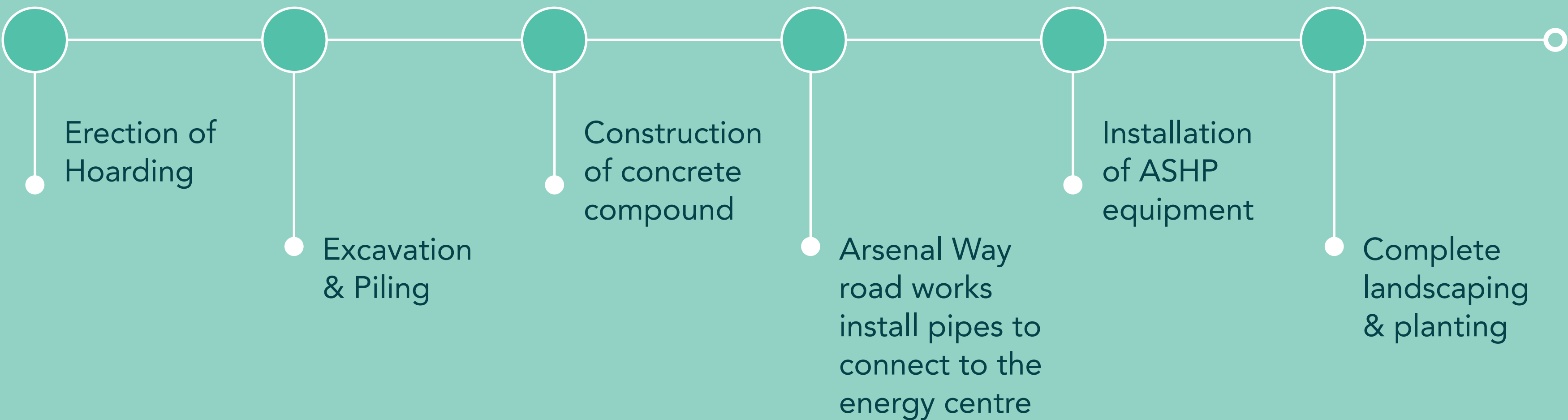
### SHARE YOUR THOUGHTS ON THE PROPOSAL & HOW WE CAN IMPROVE WELLINGTON PARK

Please place your comments here



# CONSTRUCTION

Works are anticipated to start in **Spring 2027** and complete by **Winter 2028**. Approximately 18 months to construct the compound and install the equipment.



To ensure public safety during construction, hoarding will be installed around the work area.

This will include a 2-metre zone around the edge of the Wellington Park podium and along the footpath in front of the proposed ASHPs.



## NEXT STEPS

Thank you for taking the time to view our proposals for decarbonising the energy network. We welcome your thoughts and encourage you to review the plans and share your feedback with us.

### Current Timeline:



We welcome your feedback. Please share your thoughts with us:



Call us at:  
**0800 061 4095**



Email us at:  
**info@ASHPRoyalarsenal.co.uk**



Have your say at:  
**www.ASHPRoyalarsenal.co.uk**